

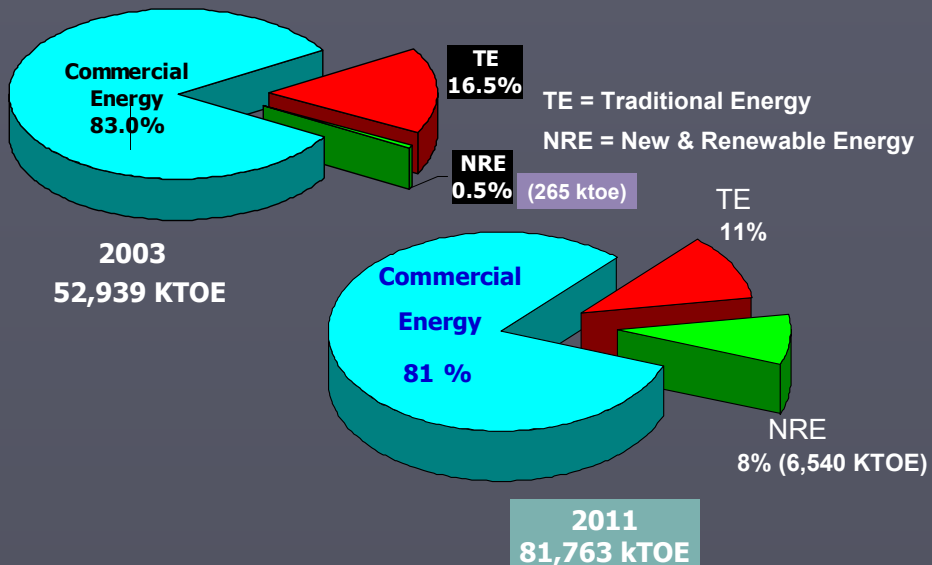
EGAT Development Plan for Renewable Energy

Alternative Energy Development Division

EGAT

July 12, 2006

Renewable Energy Policy



Existing Renewable Energy for Electricity Generating in Thailand



Mini-Hydro

25 MW



Municipal waste

2.5 MW



Solar

24 MW

Wind

170 kW



Biogas

12 MW



Biomass

800 MW



Potential Renewable Energy for Electricity Generating in Thailand



Mini-Hydro

255 MW



Municipal waste

100 MW



Solar

5,000 MW

Wind

400 MW



Biogas

50 MW



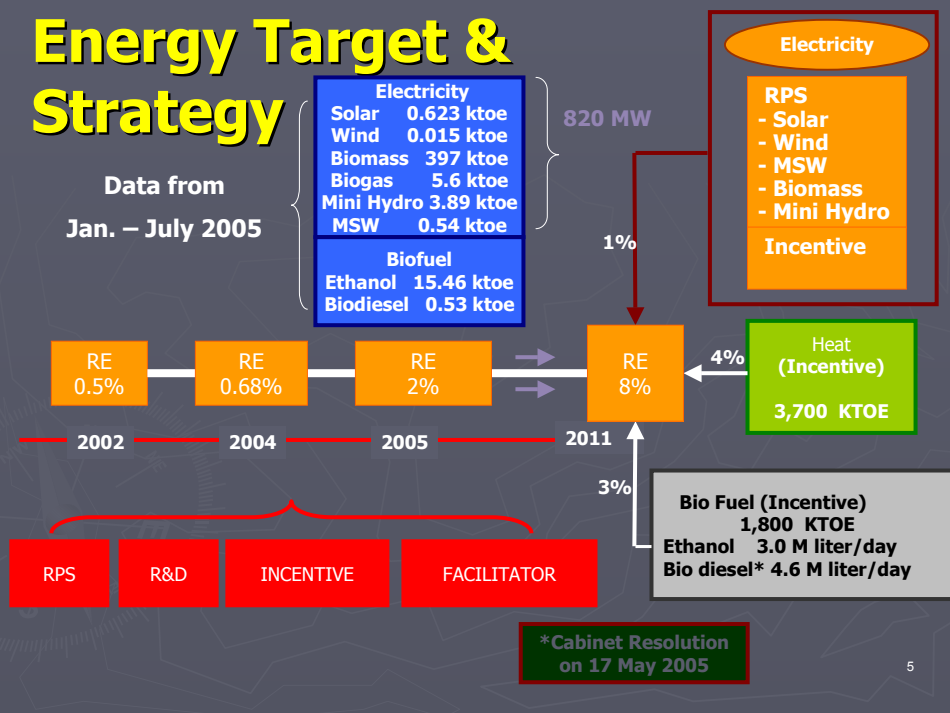
Biomass

3,300 MW



Energy Target & Strategy

Data from
Jan. – July 2005



The first RPS regulation applied to EGAT

According to EGAT PDP 2004, the four approved power plants of total capacity 2,800 MW will be constructed. Subsequently, by the year 2010 the EGAT RE power plants should be commissioned to the system at approximately 140 MW (5% RPS requirement).



EGAT RPS Tentative Plan ~ 140 MW

▶ Mini-hydro	77	MW
▶ Biomass	36	MW
▶ MSW	21	MW
▶ Solar	1	MW
▶ Wind	5	MW



Problem and/or needs

▶ Problems :

- Lacks of domestic energy resources
- Lacks of technology development and technology transfer
- Lacks of know how

▶ Technology Needs :

- New PV Technology (Nano PV)
- New Cogeneration Biomass Power Plant
- New Vertical Axis Wind Turbine
- Clean Coal Technology